

Power distribution components



## NH Fuse-Switches, vertical design and Fuse-Rails

As a specialist for safety interfaces, EFEN offers a proven assortment of NH Fuse-Switches, vertical-design and Fuse-Rails in various series with many options and versions for customer-oriented solutions.

### System

The vertical-design NH fuse-switches of the **E<sup>3</sup>** series have been developed to meet all current and future needs of the modern power industry.

The series has been developed with a special focus on the responsible handling of energy as a resource. The ease of installation sets standards when installing and connecting. Excellent electric parameters such as 120 kA short-circuit resistance complement the product.

### Features

All components are made of high-quality materials. Full range of accessories for monitoring and controlling provides the user with various options. They can be retrofitted at all times.

Mounting without drilling is equally possible at all times. There are various locking and park-position options to ensure safety.



### NH Fuse-Switches, vertical design and Fuse-Rails

NH Fuse-Switches, vertical design	
3-pole switching, for 60 mm busbar systems	page 182
for 100 mm busbar systems	page 182
for 185 mm busbar systems	page 183
NH Fuse-Switches, vertical design	
1-pole switching, for 100 mm busbar systems	page 187
for 185 mm busbar systems	page 187
NH Fuse-Rails for 100 mm busbar systems	page 191
for 185 mm busbar systems	page 191
Accessories	page 192
Technical data	page 206
Solutions for measurement and power management	page 351

#### E<sup>3</sup> NH Fuse-Switches, vertical-design and Fuse-Rails



NH Fuse-Switch, vertical design  
630 kVA



#### Multiple connection options



NH Fuse-Switch, vertical design,  
size 4a, 1-pole switching



#### Multifunctional device carrier



NH Fuse-Rail  
EDURO Series



#### Touch protection system IP2X



## E<sup>3</sup> NH Fuse-Switches, vertical design, 3-pole switching for 60 mm and 100 mm systems

► Technical data, page 210

Power distribution components



38044-0020

### E<sup>3</sup> NH Fuse-Switches, vertical design, size 00/60, 3-pole switching, 160 A, for 60 mm busbar systems with hook contacting

**Features:**

- With reversible mounting hook
- Various connection options

Designation	Size	Amps	PU	Product designation	Order no.
With multiple-use terminal (bolt M8)	00/60	160	1	E <sup>3</sup> NH-LA-LEI 00/60 3P U5	<b>38044-0020</b>
With box clamp 95 mm <sup>2</sup>	00/60	160	1	E <sup>3</sup> NH-LA-LEI 00/60 3P R5	<b>38046-0020</b>



38054-0020

### E<sup>3</sup> NH Fuse-Switches, vertical design, size 00/100, 3-pole switching, 160 A, for 100 mm busbar mounting

**Features:**

- Various connection options
- Ready for current transformer
- Top or bottom terminals selectable

Designation	Size	Amps	PU	Product designation	Order no.
With multiple-use terminal (bolt M8), for hook-mounting, hook included	00/100	160	1	E <sup>3</sup> NH-La-Lei 00/100 3P Bh U5	<b>38054-0020</b>
With box clamp 95 mm <sup>2</sup> , for hook-mounting, hooks included	00/100	160	1	E <sup>3</sup> NH-La-Lei 00/100 3P Bh R5	<b>38056-0020</b>
With multiple-use terminal (bolt M8), for transformer installation	00/100	160	1	E <sup>3</sup> NH-LA-LEI 00/100 3P WV U5	<b>38054-0050</b>
With box clamp 95 mm <sup>2</sup> , for transformer installation	00/100	160	1	E <sup>3</sup> NH-LA-LEI 00/100 3P WV R5	<b>38056-0050</b>

## E<sup>3</sup> NH Fuse-Switches, vertical design, 3-pole switching for 185 mm busbar systems

► Technical data, page 211



38064-0020

### E<sup>3</sup> NH Fuse-Switches, vertical design, size 00/185, 3-pole switching, 160 A, for 185 mm busbar mounting

#### Features:

- Direct mounting
- Variant with elevated feed bracket at 150 mm installation depth
- Variant for installation of PSR 203 current transformers

Designation	Size	Amps	PU	Product designation	Order no.
With multiple-use terminal (bolt M8), for hook-mounting	00/185 160	160	1	E <sup>3</sup> NH-La-Lei 00/185 3P U5	<b>38064-0020</b>
With box clamp 95 mm <sup>2</sup> , for hook-mounting	00/185 160	160	1	E <sup>3</sup> NH-La-Lei 00/185 3P R5	<b>38066-0020</b>
V-terminal (not including V-clamps)	00/185 160	160	1	E <sup>3</sup> NH-La-Lei 00/185 3P SWP V2	<b>38065-0021</b>
With multiple-use terminal (bolt M8), elevated feed bracket adjacent to size 1 – 3	00/185 160	160	1	E <sup>3</sup> NH-LA-LEI 00/185 3P Eh5 U5	<b>38064-0070</b>
With box clamp 95 mm <sup>2</sup> , with elevated feed bracket for direct mounting adjacent to size 1 – 3	00/185 160	160	1	E <sup>3</sup> NH-LA-LEI 00/185 3P Eh5 R5	<b>38066-0070</b>
With multiple-use terminal (bolt M8), elevated feed bracket adjacent to size 1 – 3, ready for PSR 203 transformer installation	00/185 160	160	1	E <sup>3</sup> NH-LA-LEI 00/185 3P WV EH5 U5	<b>38064-0090</b>
With box clamp 95 mm <sup>2</sup> , with elevated feed bracket for direct mounting adjacent to size 1 – 3, ready for PSR 203 transformer installation	00/185 160	160	1	E <sup>3</sup> NH-LA-LEI 00/185 3P WV EH5 R5	<b>38066-0090</b>



38016-0020

### E<sup>3</sup> NH Fuse-Switches, vertical design, size 1 to 3, 3-pole switching, for 185 mm busbar systems

Designation	Size	Amps	PU	Product designation	Order no.
With multiple-use terminal (bolt M12)	1	250	1	E <sup>3</sup> NH-LA-LEI 1 3P U6	<b>38016-0020</b>
With multiple-use terminal (bolt M12)	2	400	1	E <sup>3</sup> NH-LA-LEI 2 3P U6	<b>38026-0020</b>
With multiple-use terminal (bolt M12)	3	630	1	E <sup>3</sup> NH-LA-LEI 3 3P U6	<b>38036-0020</b>
With V2N terminal (not including clamps)	1	250	1	E <sup>3</sup> NH-LA-LEI 1 3P V2N	<b>38015-0020</b>
With V2N terminal (not including clamps)	2	400	1	E <sup>3</sup> NH-LA-LEI 2 3P V2N	<b>38025-0020</b>
With V2N terminal (not including clamps)	3	630	1	E <sup>3</sup> NH-LA-LEI 3 3P V2N	<b>38035-0020</b>



38070-0730

### E<sup>3</sup> NH Fuse-Switches, vertical design, size 3, 3-pole switching, for 185 mm busbar systems, 910 A

Designation	Size	Amps	PU	Product designation	Order no.
Screw terminal 3 x 185 mm <sup>2</sup>	3	910	1	E <sup>3</sup> NH-La-Lei 3 910A 3P 3x185mm <sup>2</sup>	<b>38070-0670</b>
Screw terminal M12 rear, horizontal	3	910	1	E <sup>3</sup> NH-La-Lei 3 910A 3Phh L6	<b>38070-0730</b>
Special screw terminal M16 and M12	3	910	1	E <sup>3</sup> NH-La-Lei 3 910A 3PHg L8L6	<b>38070-0770</b>
Screw terminal M12	3	910	1	E <sup>3</sup> NH-La-Lei 3 910A 3P S6S6	<b>38070-0790</b>



38010-0160

### E<sup>3</sup> NH Fuse-Switches, vertical design, size 1 – 3, 3-pole switching, as coupling unit for connecting 2 busbar systems

Designation	Size	Amps	PU	Product designation	Order no.
Size 1, 3-pole switching	1	250	1	E <sup>3</sup> NH-LA-LEI 1 3P KI	<b>38010-0160</b>
Size 2, 3-pole switching	2	400	1	E <sup>3</sup> NH-LA-LEI 2 3P KI	<b>38020-0160</b>
Size 3, 3-pole switching	3	630	1	E <sup>3</sup> NH-LA-LEI 3 3P KI	<b>38030-0160</b>

## E<sup>3</sup> NH Fuse-Switches, vertical design, 3-pole switching for 185 mm busbar systems

► Technical data, page 230

Power distribution components



38036-0180

### E<sup>3</sup>-NH Fuse-Switch, vertical design, size 3, 3-pole switching for parallel operation of 2 NH Fuse-Switches

**Features:**

- Terminal: four M12 bolts
- For other types please inquire
- Precise split of the current flow by pre-assembled terminals

Designation	Size	Amps	PU	Product designation	Order no.
E <sup>3</sup> -NH fuse-switch, vertical design, for parallel operation of 2 NH fuse-switches (twinning kit), terminal M12	3	1260	1	E <sup>3</sup> NH-LA-LEI 3 3P Zw U6	<b>38036-0180</b>



38036-0080

### E<sup>3</sup> NH Fuse-Switches, vertical design, size 3, 3-pole switching with fixed 1000 A solid-links as feed switch

**Features:**

- Top or bottom terminal
- Two M12 screw terminals

Designation	Size	Amps	PU	Product designation	Order no.
Feed switch 1000 A with fixed solid-link	3	1000	1	E <sup>3</sup> NH-LA-TR-LEI 1000A 3P U6	<b>38036-0080</b>



38030-0220

### E<sup>3</sup> NH Fuse-Switches, vertical design, for connecting 2 busbar systems, 3-pole, with fixed 1000 A solid-link

Designation	Size	Amps	PU	Product designation	Order no.
Incoming switch with integrated solid-link, for busbar isolation, internal terminal	3	1000	1	E <sup>3</sup> NH-LA-TR-LEI 1000A 3P KL	<b>38030-0220</b>
Incoming switch with integrated solid-link, for busbar isolation, terminal on the right-hand side, for current transformer installation	3	1000	1	E <sup>3</sup> NH-LA-TR-LEI 1000A 3P KL2	<b>38030-0240</b>



Internal terminal



Lateral terminal

## E<sup>3</sup> NH Fuse-Switches, vertical design, 3-pole switching for 185 mm busbar systems

► Technical data, page 236



38034-0300

### E<sup>3</sup> NH Fuse-Switches, vertical design, size 3, 3-pole switching, with fixed 1000-A solid-link for 2000 A

Designation	Size	Amps	PU	Product designation	Order no.
Multiple-use terminal (bolt M12)	3	2000	1	E <sup>3</sup> NH-LA-TR-LEI 2x1000A 3P Zw U6	<b>38036-0300</b>
Coupling unit, supported on left-hand side	3	2000	1	E <sup>3</sup> NH-LA-TR-LEI 2000A 3P KL2	<b>38030-0350</b>



38016-0460

### E<sup>3</sup> NH Fuse-Switches, vertical design, size 1 to 3, 3-pole switching, for 185 mm busbar systems, high performance

#### Features:

- 20 % less power dissipation
- 120 kA short-circuit resistance
- Excellent economic efficiency

Designation	Size	Amps	PU	Product designation	Order no.
With multiple-use terminal (bolt M12)	1	250	1	E <sup>3</sup> NH-LA-LEI 1 3P HP U6	<b>38016-0460</b>
With multiple-use terminal (bolt M12)	2	400	1	E <sup>3</sup> NH-LA-LEI 2 3P HP U6	<b>38026-0460</b>
With multiple-use terminal (bolt M12)	3	630	1	E <sup>3</sup> NH-LA-LEI 3 3P HP U6	<b>38036-0460</b>



Example for IP2X application

### E<sup>3</sup> NH Fuse-Switches, vertical design, for IP2X applications

Designation	Size	Amps	PU	Product designation	Order no.
E <sup>3</sup> NH-LA-LEI 00/185 1P Bh IP20 U5	00/185	160	1	E <sup>3</sup> NH-LA-LEI 00/185 1P Bh IP20 U5	<b>38064-0500</b>
E <sup>3</sup> NH-LA-LEI 00/185 3P Bh IP20 U5	00/185	160	1	E <sup>3</sup> NH-LA-LEI 00/185 3P Bh IP20 U5	<b>38064-0520</b>
E <sup>3</sup> NH-LA-LEI 1 3P IP20 U6	1	250	1	E <sup>3</sup> NH-LA-LEI 1 3P IP20 U6	<b>38016-0520</b>
E <sup>3</sup> NH-LA-LEI 2 3P IP20 U6	2	400	1	E <sup>3</sup> NH-LA-LEI 2 3P IP20 U6	<b>38026-0520</b>
E <sup>3</sup> NH-LA-LEI 3 3P IP20 U6	3	630	1	E <sup>3</sup> NH-LA-LEI 3 3P IP20 U6	<b>38036-0520</b>
Busbar cover IP20	00-3		1	Sammelschienenabdeckung IP20	<b>36329-0010</b>
Feeding clamp IP2X V2MD 240sm / 300rm	00-3		3	Einspeiseklemme IP2X V2MD 240sm/300rm	<b>36846-0040</b>

## NH Fuse-Switches, vertical design, 3-pole switching, for 185 mm busbar systems

► Technical data, page 238



38300-1275

### NH Fuse-Switches, vertical design, size 3, 3-pole switching, 630 kVA, NTSL series

Designation	Size	Amps	PU	Product designation	Order no.
Screw terminal M12, bottom terminal, 3-pole switching	3	630kVA	1	NH-LA-LEI 3 3PU 630KVA VE SM ST GG L6	<b>38300-1275</b>
Screw terminal M12, top terminal, 3-pole switching	3	630kVA	1	NH-LA-LEI 3 3PO 630KVA VE SM ST GG L6	<b>38350-1275</b>
Special terminal for 60 mm busbars, top terminal, 3-pole switching	3	630kVA	1	NH-LA-LEI 3 3PO 630KVA SV L8 (L6)	<b>38350-1595</b>
Screw terminal M12, rear terminal, 3-pole switching	3	630kVA	1	NH-LA-LEI 3 3PH 630KVA VE GG S6	<b>38374-1495</b>

## E<sup>3</sup> NH Fuse-Switches, vertical design, 1-pole switching, for 100 mm and 185 mm busbar systems

► Technical data, page 210



38054-0000

### E<sup>3</sup> NH Fuse-Switches, vertical design, size 00/100, 1-pole switching, 160 A, for 100 mm busbars

#### Features:

- Various connection options
- Ready for current transformer
- Top or bottom terminals selectable

Designation	Size	Amps	PU	Product designation	Order no.
With multiple-use terminal (bolt M8), for hook-mounting, hook included	00/100 160	160	1	E <sup>3</sup> NH-LA-Lei 00/100 1P Bh U5	<b>38054-0000</b>
With box clamp 95 mm <sup>2</sup> , for hook-mounting, hooks included	00/100 160	160	1	E <sup>3</sup> NH-LA-LEI 00/100 1P R5	<b>38056-2000</b>
With multiple-use terminal (bolt M8), for transformer installation	00/100 160	160	1	E <sup>3</sup> NH-LA-LEI 00/100 1P WV U5	<b>38054-0040</b>
With box clamp 95 mm <sup>2</sup> , for transformer installation	00/100 160	160	1	E <sup>3</sup> NH-LA-LEI 00/100 1P WV R5	<b>38056-0040</b>



38064-0060

### E<sup>3</sup> NH Fuse-Switches, vertical design, size 00/185, 1-pole switching, 160 A, for 185 mm busbars

#### Features:

- Direct mounting
- Variant with elevated feed bracket at 150 mm installation depth
- Variant for installation of PSR 203 current transformers

Designation	Size	Amps	PU	Product designation	Order no.
With multiple-use terminal (bolt M8), f or hook-mounting	00/185 160	160	1	E <sup>3</sup> NH-La-Lei 00/185 1P U5	<b>38064-0000</b>
With box clamp 95 mm <sup>2</sup> , for hook-mounting	00/185 160	160	1	E <sup>3</sup> NH-La-Lei 00/185 1P R5	<b>38066-0000</b>
With V2 terminal (not including clamps)			1	E <sup>3</sup> NH-La-Lei 00/185 1P SWP V2	<b>38065-0001</b>
With multiple-use terminal (bolt M8), elevated feed bracket adjacent to size 1 – 3	00/185 160	160	1	E <sup>3</sup> NH-LA-LEI 00/185 1P Eh5 U5	<b>38064-0060</b>
With box clamp 95 mm <sup>2</sup> , with elevated feed bracket for direct mounting adjacent to size 1 – 3	00/185 160	160	1	E <sup>3</sup> NH-LA-LEI 00/185 1P Eh5 R5	<b>38066-0060</b>
With multiple-use terminal (bolt M8), with elevated feed bracket for direct mounting adjacent to size 1 – 3, ready for PSR 203 transformer installation	00/185 160	160	1	E <sup>3</sup> NH-LA-LEI 00/185 1P WV EH5 U5	<b>38064-0080</b>
With box clamp 95 mm <sup>2</sup> , with elevated feed bracket for direct mounting adjacent to size 1 – 3, ready for PSR 203 transformer installation	00/185 160	160	1	E <sup>3</sup> NH-LA-LEI 00/185 1P WV EH5 R5	<b>38066-0080</b>



## E<sup>3</sup> NH Fuse-Switches, vertical design, 1-pole switching, for 185 mm busbar systems

► Technical data, page 214



38016-0000

### E<sup>3</sup> NH Fuse-Switches, vertical design, size 1 – 3, 3-pole switching, for 185 mm busbar systems

Designation	Size	Amps	PU	Product designation	Order no.
With multiple-use terminal (bolt M12)	1	250	1	E <sup>3</sup> NH-LA-LEI 1 1P U6	<b>38016-0000</b>
With multiple-use terminal (bolt M12)	2	400	1	E <sup>3</sup> NH-LA-LEI 2 1P U6	<b>38026-0000</b>
With multiple-use terminal (bolt M12)	3	630	1	E <sup>3</sup> NH-LA-LEI 3 1P U6	<b>38036-0000</b>
With V2N terminal (not including clamps)	1	250	1	E <sup>3</sup> NH-LA-LEI 1 1P V2N	<b>38015-0000</b>
With V2N terminal (not including clamps)	2	400	1	E <sup>3</sup> NH-LA-LEI 2 1P V2N	<b>38025-0000</b>
With V2N terminal (not including clamps)	3	630	1	E <sup>3</sup> NH-LA-LEI 3 1P V2N	<b>38035-0000</b>



38036-0600

### E<sup>3</sup> NH Fuse-Switches, vertical design, size 1 – 3, 1-pole switching, with flush handle

**Features:**

- For 168 mm installation depth

Designation	Size	Amps	PU	Product designation	Order no.
With multiple-use terminal (bolt M12)	1	250	1	E <sup>3</sup> NH-LA-LEI 1 1P Fb U6	<b>38016-0600</b>
With multiple-use terminal (bolt M12)	2	400	1	E <sup>3</sup> NH-LA-LEI 2 1P Fb U6	<b>38026-0600</b>
With multiple-use terminal (bolt M12)	3	630	1	E <sup>3</sup> NH-LA-LEI 3 1P Fb U6	<b>38036-0600</b>

Power distribution components

## NH Fuse-Switches, vertical design, 1-pole switching, for 185 mm busbar systems

► Technical data, page 234



38400-0000

### NH Fuse-Switches, vertical design, size 4a, 1-pole switching, for 185 mm busbar systems

Designation	Size	Amps	PU	Product designation	Order no.
Bottom terminals, screw terminal M16	4a	1250	1	NH-LA-LEI 4A 1PU L8	<b>38400-0000</b>
Top terminals, screw terminal M16	4a	1250	1	NH-LA-LEI 4A 1PO L8	<b>38450-0000</b>
Bottom terminals, screw terminal 2 x M12	4a	1600	1	NH-LA-LEI 4A 1PU 1600A L6	<b>38400-0020</b>
Top terminals, screw terminal 2 x M12	4a	1600	1	NH-LA-LEI 4A 1PO 1600A L6	<b>38450-0020</b>



38070-0760

### E<sup>3</sup> NH Fuse-Switches, vertical design, size 3, 1-pole switching, for 185 mm busbar systems, 910 A

Designation	Size	Amps	PU	Product designation	Order no.
Screw terminal M12 rear side, horizontal	3	910	1	E <sup>3</sup> NH-La-Lei 3 910A 1Phh L6	<b>38070-0720</b>
Special screw terminal M16 and M12	3	910	1	E <sup>3</sup> NH-La-Lei 3 910A 1PHg L8L6	<b>38070-0760</b>
Screw terminal M12	3	910	1	E <sup>3</sup> NH-La-Lei 3 910A 1P S6S6	<b>38070-0780</b>
Screw terminal M16, rear side, elevated bracket	3	910	1	E <sup>3</sup> NH-La-Lei 3 910A 1Phhw L8	<b>38070-0830</b>
Screw terminal rear side, upper left-hand side	3	910	1	E <sup>3</sup> NH-La-Lei 3 910A 1PhwLO	<b>38077-0820</b>



38300-1235

### NH Fuse-Switches, vertical design, size 3, 1-pole switching, 630 kVA, NTSL series

Designation	Size	Amps	PU	Product designation	Order no.
Screw terminal M12, bottom terminal, 1-pole switching	3	630kVA	1	NH-LA-LEI 3 1PU 630KVA VE SM ST GG L6	<b>38300-1235</b>
Screw terminal M12, top terminal, 1-pole switching	3	630kVA	1	NH-LA-LEI 3 1PO 630KVA VE SM ST GG L6	<b>38350-1235</b>
Screw terminal M12, rear terminal, 1-pole switching	3	630kVA	1	NH-LA-LEI 3 1PH 630KVA VE GG S6	<b>38374-1465</b>

### E<sup>3</sup> NH Fuse-Switches, size 1-3, 1-pole switching, for 185 mm busbar systems, feed switches and parallel switches, coupling units

#### Features:

- Both terminals internal
- Busbar isolation at device center
- No space lost

Designation	Size	Amps	PU	Product designation	Order no.
Size 1, 1-pole switching	1	250	1	E <sup>3</sup> NH-LA-LEI 1 1P KI	<b>38010-0150</b>
Size 2, 1-pole switching	2	400	1	E <sup>3</sup> NH-LA-LEI 2 1P KI	<b>38020-0150</b>
Size 3, 1-pole switching	3	630	1	E <sup>3</sup> NH-LA-LEI 3 1P KI	<b>38030-0150</b>



38036-0170

### E<sup>3</sup> NH Fuse-Switches, vertical design, size 3, 1-pole switching for parallel operation of 2 NH Fuse-Switches

#### Features:

- Terminal: four M12 bolts
- For other types please inquire
- Precise split of the current flow by pre-assembled terminals

Designation	Size	Amps	PU	Product designation	Order no.
E <sup>3</sup> -NH fuse-switch, vertical design, for parallel operation of 2 NH fuse-switches (twinning kit), terminal M12	3		1	E <sup>3</sup> NH-LA-LEI 3 1P Zw U6	<b>38036-0170</b>

## E<sup>3</sup> NH Fuse-Switches, vertical design, 1-pole switching, for 185 mm busbar systems

► Technical data, page 240



38036-0290

### E<sup>3</sup> NH Fuse-Switches, vertical design, size 3, 1-pole switching, for 1000 or 2000 A

Designation	Size	Amps	PU	Product designation	Order no.
Parallel switch with integrated solid-link, multiple-use terminal (bolt M12)	3	2000	1	E <sup>3</sup> NH-LA-TR-LEI 2x1000A 1P Zw U6	<b>38036-0290</b>
Fuse-switch, vertical design, with integrated solid-link, for busbar isolation, internal terminal	3	1000	1	E <sup>3</sup> NH-LA-TR-LEI 1000A 1P KL	<b>38030-0210</b>
Fuse-switch, vertical design, with integrated solid-link, terminal supported on left-hand side	3	1000	1	E <sup>3</sup> NH-LA-TR-LEI 1000A 1P KL2	<b>38030-0230</b>

### NH Fuse-Switch coupling unit, vertical design, size 4a, 1-pole switching for connecting 2 busbar systems with 185 mm spacing

Designation	Size	Amps	PU	Product designation	Order no.
Coupling unit, 1 pole switching, terminal at the front left-hand side of busbar	4a	1250	1	NH-LA-LEI 4A 1P KL1	<b>38400-0260</b>



38010-0110

### E<sup>3</sup>-NH Fuse-Switch, vertical design, size 1 - 3, 1-pole switching, with special terminals

Designation	Size	Amps	PU	Product designation	Order no.
Terminal on the right-hand side	1	250	1	E <sup>3</sup> NH-LA-LEI 1 1Pr L6	<b>38010-0110</b>
Terminal on the left-hand side	1	250	1	E <sup>3</sup> NH-LA-LEI 1 1PI L6	<b>38010-0130</b>
Terminal on the rear side	1	250	1	E <sup>3</sup> NH-LA-LEI 1 1Ph L6	<b>38010-0090</b>
Terminal on the right-hand side	2	400	1	E <sup>3</sup> NH-LA-LEI 2 1Pr L6	<b>38020-0110</b>
Terminal on the left-hand side	2	400	1	E <sup>3</sup> NH-LA-LEI 2 1PI L6	<b>38020-0130</b>
Terminal on the rear side	2	400	1	E <sup>3</sup> NH-LA-LEI 2 1Ph L6	<b>38020-0090</b>
Terminal on the right-hand side	3	630	1	E <sup>3</sup> NH-LA-LEI 3 1Pr L6	<b>38030-0110</b>
Terminal on the left-hand side	3	630	1	E <sup>3</sup> NH-LA-LEI 3 1PI L6	<b>38030-0130</b>
Terminal on the rear side	3	630	1	E <sup>3</sup> NH-LA-LEI 3 1Ph L6	<b>38030-0090</b>



38662-0000

### NH Fuse-Switch, vertical design, size 2, 1-pole switching, EKDEO series

Designation	Size	Amps	PU	Product designation	Order no.
Clinch nut M12	2	400	1	EKDEO 1/2 1P S6	<b>38664-0000</b>
V-terminal (not including clamp)	2	400	1	EKDEO 1/2 1P V2	<b>38665-0000</b>
Stud M12 x 30	2	400	1	EKDEO 1/2 1P B6	<b>38662-0000</b>
V2N terminal (not including clamp)	2	400	1	EKDEO 1/2 1P V2N	<b>38665-0470</b>

## NH Fuse-Rails for 100 mm and 185 mm busbar systems

► Technical data, page 241



38765-0001

### NH Fuse-Rails, size 00 – 3, with contact and terminal cover

Designation	Amps	PU	Product designation	Order no.
Screw terminal M8, 100 mm busbar spacing	160	1	NH-LEI 00N SH G4	<b>38550-0020</b>
Multiple-use terminal (bolt M8), 185 mm busbar spacing	160	3	NH-LEI 00/185 SH U5	<b>38570-0020</b>
V2N terminal, including V-clamps 35-240 sm/35-300 se, 185 mm busbar spacing	160	2	NH-LEI 00/185 SH BG VK V2N	<b>38575-0600</b>
with V2 terminal (not including clamps)	160	1	E <sup>3</sup> NH-Lei 00/185 V2	<b>38765-0001</b>
Clinch nut M12, EDURO series	400	1	NH-LEI 1-2 SH S6	<b>38864-0020</b>
V2N terminal (not including V-clamps), EDURO series	400	1	NH-LEI 1-2 SH V2N	<b>38865-0020</b>
Clinch nut M12		1	NH-LEI 3N SH KH S6	<b>38954-0140</b>
V2N terminal (not including clamp)	630	1	NH-LEI 3N SH V2N	<b>38955-0020</b>
for applications up to 1200 V DC, suitable for NH fuses of size 2XL and 3L	400	1	NH-LEI 2XL/3L 2P 1200VDC 400A SH S6	<b>38954-0030</b>

## Accessories

### NH Fuse-Switches, vertical design, size 00



36338-0010

#### E<sup>3</sup> twin adapter for mounting size 00/60 on busbar systems with 185 mm spacing

Designation	Size	PU	Product designation	Order no.
E <sup>3</sup> twin adapter for installation of size 00/60 for 185 mm busbar spacing	00/60	1	Doppeladapter E <sup>3</sup> 60/185	<b>36338-0010</b>



36337-0010

#### E<sup>3</sup> twin adapter for mounting size 00/100 on busbar systems with 185 mm spacing

Designation	Size	PU	Product designation	Order no.
E <sup>3</sup> twin adapter for mounting of size 00/100 on busbar systems with 185 mm spacing	00/100	1	Doppeladapter E <sup>3</sup> 100/185	<b>36337-0010</b>



36440-0010

#### E<sup>3</sup> twin adapter for mounting size 00/100 on busbar systems with 185 mm spacing with hook-mounting on the busbar

Designation	Size	PU	Product designation	Order no.
E <sup>3</sup> twin adapter for mounting of size 00/100 on 185 mm busbar spacing with hook-mounting on busbar	00/100	1	Doppeladapter E <sup>3</sup> 100/185 Bh	<b>36440-0010</b>



36339-0010

#### E<sup>3</sup> single adapter for mounting size 00/100 on busbar systems with 185 mm spacing

Designation	Size	PU	Product designation	Order no.
E <sup>3</sup> single adapter for installation of size 00/100 on busbar systems with 185 mm spacing	00/100	4	Einfachadapter E <sup>3</sup> 100/185	<b>36339-0010</b>



36398-0010

#### E<sup>3</sup> twin adapter for height adjustment when mounting size 00/185 next to size 1-3

Designation	Size	PU	Product designation	Order no.
E <sup>3</sup> twin adapter for height adjustment when mounting size 00/185 next to size 1 – 3	00/185	1	Doppeladapter E <sup>3</sup> 185/185	<b>36398-0010</b>



36445-0010

#### Blanking cover for adapter size 00, 185 mm long, 50 mm wide with spacer bolt

Designation	Size	PU	Product designation	Order no.
BLANKING COVER E <sup>3</sup> 50/185	00	1	LEERFELDABDECKUNG E <sup>3</sup> 50/185	<b>36445-0010</b>



36397-0010

#### Blanking cover for adapter size 00, 185 mm long, 50 mm wide

Designation	Size	PU	Product designation	Order no.
Blanking cover, 50 mm wide –185 mm long	00/185	1	LEERFELDABDECKUNG E <sup>3</sup> 50/185	<b>36397-0010</b>



36330-0010

#### Frame for length adjustment for size 00, 60/100 mm

##### Features:

- Length adjustment with E<sup>3</sup>-NH fuse-switches, vertical design, size 1 – 3
- Kit = 1 piece each

Designation	Size	PU	Product designation	Order no.
1 kit of upper/lower adjustment frames for length adjustment when mounting size 1 – 3.	00/60 00/100	1	AUSGLEICHSBLENDEN SET E <sup>3</sup> GR.00	<b>36330-0010</b>

## Accessories

### NH Fuse-Switches, vertical design, size 00



36331-0010

#### Angle bracket

##### Features:

- Lateral or top installation
- 5 mm grid
- Clips onto universal sideframe
- With thread M6 or bore for PT screws Ø 3.5 mm
- Secures the protection cover

Designation	Size	PU	Product designation	Order no.
Lateral angle bracket for mounting universal sideframes	00-3	4	ABSTÜTZW. SET=4ST. E <sup>3</sup> GR.00-3	<b>36331-0010</b>



36727-0010

#### Lateral cover

##### Features:

- Lateral cover for busbars
- Mounts to E<sup>3</sup> NH fuse-switch, vertical design

Designation	Size	PU	Product designation	Order no.
Lateral safety cover, mounted on the device	00/185 3	1	Seitlicher Berührungsschutz E <sup>3</sup> 00/185- 3	<b>36727-0010</b>



36380-0010

#### Identification label for size 00/60 to 00/185

Designation	Size	PU	Product designation	Order no.
Product identification label for identification holder	00/60 00/185	1	Produktbezeichnungsschild E <sup>3</sup> Gr.00	<b>36380-0010</b>



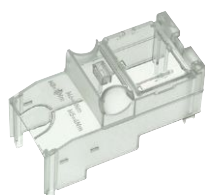
36391-0010

#### Identification holder, short, for size 00/185

##### Features:

- Fits E<sup>3</sup>-NH fuse-switches, vertical design, size 00/185

Designation	Size	PU	Product designation	Order no.
Identification holder, short, clipping to top or bottom	00/185	1	Infoträger klappbar E <sup>3</sup> Gr.00/185	<b>36391-0010</b>



36400-0010

#### Terminal cover, short, for size 00/60 and 00/100

##### Features:

- For use with box clamps

Designation	Size	PU	Product designation	Order no.
Terminal cover, short, f or use with box clamps	00/60 00/100	1	Anschlussraumabd. kurz E <sup>3</sup> 00/60/100	<b>36400-0010</b>
E <sup>3</sup> terminal cover, long, 00/60/100		1	Anschlussraumabd. lang E <sup>3</sup> 00/60/100	<b>36401-0010</b>



36402-0010

#### Terminal cover, short, for size 00/185

##### Features:

- For use with box clamps

Designation	Size	PU	Product designation	Order no.
Terminal cover, short, for use with box clamps	00/185	1	Anschlussraumabd. kurz E <sup>3</sup> 00/185	<b>36402-0010</b>

## Accessories

### NH Fuse-Switches, vertical design, size 00



36377-0010

#### Pressure plates

##### Features:

- For Cu conductor
- Kit = 3 pieces

Designation	Size	PU	Product designation	Order no.
Pressure plates for direct cable connection, 1.5 – 25 mm <sup>2</sup> , (re, sm or flat conductor 16 – 10 mm)	00	3	1Satz (3Stück) Druckstücke E <sup>3</sup> Gr.00	<b>36377-0010</b>



36378-0010

#### Pressure plates 95 mm<sup>2</sup> with contact prism

##### Features:

- For Cu and Al conductors
- Kit = 3 pieces

Designation	Size	PU	Product designation	Order no.
Pressure plates with contact prism for direct cable-connection, 1.5 – 95 mm <sup>2</sup> , (re, sm or flat conductor 16 – 10 mm)	00	3	1Satz (3Stück) Kontaktprismen E <sup>3</sup> Gr.00	<b>36378-0010</b>



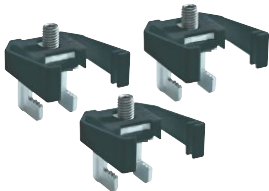
36366-0010

#### Pressure plates 150 mm<sup>2</sup> with contact prism for size 00, 185 mm

##### Features:

- For Cu and Al conductors
- Kit = 3 pieces

Designation	Size	PU	Product designation	Order no.
Pressure plates with contact prism for direct cable-connection, 70 – 150 mm <sup>2</sup> , (re, sm, rm)	00/185	3	1SATZ (3STÜCK) KONTAKTPRISMEN E <sup>3</sup> 00/185	<b>36366-0010</b>



36367-0010

#### Contact hooks for size 00/185 for direct mounting

##### Features:

- For flat bars of 5 – 10 mm
- For direct mounting for sizes 1 – 3
- Kit = 3 pieces

Designation	Size	PU	Product designation	Order no.
Contact hooks for E <sup>3</sup> -NH fuse-switches, vertical design, size 00/185, elevated feed bracket	00/185	3	1 Satz Kontakthaken E <sup>3</sup> 00/185 Eh 150mm	<b>36367-0010</b>
1 kit (3 pieces) E <sup>3</sup> hooks, size 00/100/185	00/185	3	1Satz (3St.) E <sup>3</sup> Haken Gr.00/100/185	<b>36392-0010</b>

#### V-clamps

Designation	PU	Product designation	Order no.
1 kit of clamps E <sup>3</sup> VST 00 Vk7 95se	3	1 Satz Klemmen E <sup>3</sup> VST 00 Vk7 95se	<b>36749-0010</b>
1 kit of clamps E <sup>3</sup> VST 00 Vk7 95se	3	1 Satz Klemmen E <sup>3</sup> VST 00 Vk7 95se	<b>36768-0010</b>

## Accessories

### NH Fuse-Switches, vertical design, size 00



36395-0010

#### Device carrier, short, 95 mm, for size 00, 100/185 mm

##### Features:

- For plug-in current meters

Designation	Size	PU	Product designation	Order no.
Clip-on device carrier, 1-phase, 95 mm long	00/60- 00/185	1	Ausgleichsblende 00 95 2Löcher	<b>36395-0010</b>
Clip-on device carrier, 3-phase, 95 mm long	00/60- 00/185	1	AUSGLEICHSBLENDE E <sup>3</sup> Gr.00 95 3phasig	<b>36388-0010</b>
Clip-on device carrier, 95 mm long, blanking element	00/60- 00/185	1	AUSGLEICHSBLENDE E <sup>3</sup> Gr.00 95mm	<b>36386-0010</b>



36387-0010

#### Device carrier, short, 95 mm, for size 00/60 to 00/185

##### Features:

- For flush current meters

Designation	Size	PU	Product designation	Order no.
Clip-on device carrier, 95 mm long, 1 cut-out	00/60- 00/185	1	Gerätehalter E <sup>3</sup> Gr.00 K 48x48mm	<b>36387-0010</b>



36385-0010

#### Device carrier, long, 135 mm, for size 00/60 to 00/185

##### Features:

- For flush current meters

Designation	Size	PU	Product designation	Order no.
Clip-on device carrier, 135 mm long, 1 cut-out	00/60- 00/185	1	Gerätehalter E <sup>3</sup> Gr.00 L 48x48mm	<b>36385-0010</b>



36335-0010

#### Microswitch for position indication, size 00/60 to 00/185

##### Features:

- NC-contact or NO-contact microswitch
- 2 A / 250 V AC plug-in tab 2.8 x 0.5 mm

##### Use:

- 2 microswitches for 3-pole-switching devices

Designation	Size	PU	Product designation	Order no.
Microswitch for switch position indication, 1 NC contact or 1 NO contact, 1 kit = 6 pieces	00/60 00/185	6	Mikrosch.Schaltstellung. E <sup>3</sup> 00(1Set=6St)	<b>36335-0010</b>



36379-0010

#### Window locking system

##### Features:

- Locks sliding window
- Installs internally

##### Screws

- Kit = 3 pieces

Designation	Size	PU	Product designation	Order no.
Window locking system against unauthorized use	00 - 3	3	1Satz (3St) Stromdiebstahlsich. E <sup>3</sup> 00-3	<b>36379-0010</b>



## Accessories

### NH Fuse-Switches, vertical design, size 1 – 3



36435-0010

#### Terminal cover, long

**Features:**

- Terminal cover 36444-0010
- For optimal protection against accidental contact

Designation	Size	PU	Product designation	Order no.
E <sup>3</sup> terminal cover, extra long	1-3	1	E <sup>3</sup> Anschlussraumabdeckung extra lang	<b>36435-0010</b>



36381-0010

#### Partition wall

**Features:**

- Partition wall for terminal space
- For long cable lugs
- 95 mm long

Designation	Size	PU	Product designation	Order no.
Partition wall for terminal space when using long lugs, 95 mm long	1-3	1	Trennwand E <sup>3</sup> Gr.1-3	<b>36381-0010</b>



36438-0010

#### Terminal cover, short

**Features:**

- For use with V-clamps and box clamps

Designation	Size	PU	Product designation	Order no.
Terminal cover, short, for V-clamps or steel box clamps	1-3	1	Anschlussraumabdeckung E <sup>3</sup> Gr.1-3 kurz	<b>36438-0010</b>



36331-0010

#### Angle bracket

**Features:**

- For top or side mounting with size 00 – 3
- 5 mm grid, installation depth 120 – 150 mm
- Clips onto universal sideframe
- For bolting the protection cover- with thread M6 or hole for PT screws Ø 3.5 mm

Designation	Size	PU	Product designation	Order no.
Lateral angle bracket for mounting universal sideframes	00-3	4	ABSTÜTZW. SET=4ST. E <sup>3</sup> GR.00-3	<b>36331-0010</b>



36390-0010

#### Sideframe, universal

**Features:**

- Clips onto angle bracket, length 850 mm
- Fits on all sides

Designation	PU	Product designation	Order no.
Sideframe, universal, for E <sup>3</sup> NH fuse-switches, vertical design, length 850 mm	1	Blendstreifen E <sup>3</sup> 850mm	<b>36390-0010</b>



36727-0010

#### Lateral cover

**Features:**

- Lateral cover for busbars
- Fits E<sup>3</sup>-NH fuse-switch, vertical design

Designation	Size	PU	Product designation	Order no.
Lateral safety cover, mounted on device	00/185 3	1	Seitlicher Berührungsschutz E <sup>3</sup> 00/185- 3	<b>36727-0010</b>



36409-0010

#### Blanking cover

**Features:**

- Covers busbars

Designation	Size	PU	Product designation	Order no.
Cover mounts directly onto busbar	1-3	1	E <sup>3</sup> Reserveplatzabdeckung	<b>36409-0010</b>
Cover with spacer bolts for elevated mounting	1-3	1	E <sup>3</sup> Reserveplatzabdeckung m. Bolzen	<b>36410-0010</b>

## Accessories

### NH Fuse-Switches, vertical design, size 1 – 3



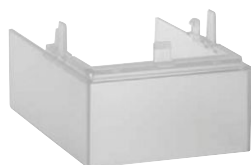
36356-0010

#### Identification holder

##### Features:

- Provides space for additional information
- Can also be used as top cover

Designation	Size	PU	Product designation	Order no.
Identification holder, clips to top or bottom	1-3	1	Bez.-schildträger kompl. kurz Gr.1 EFEN	<b>36356-0010</b>
Identification holder, compl., short, size 2, EFEN		1	Bez.-schildträger kompl. kurz Gr.2 EFEN	<b>36356-0020</b>
Identification holder, compl., short, size 3, EFEN		1	Bez.-schildträger kompl. kurz Gr.3 EFEN	<b>36356-0030</b>
Identification holder E <sup>3</sup> , short, neutral		2	Beschriftungsträger E <sup>3</sup> kurz neutral	<b>36405-0010</b>



31946-0100

#### Extension for terminal cover for EKDEO series

Designation	PU	Product designation	Order no.
Extension for terminal cover for EKDEO series	1	ARA-VERLÄNGERUNG LA-LEI 1/2 EVU	<b>31946-0100</b>



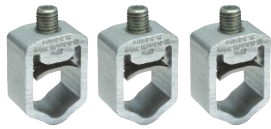
31607-0100

#### Connecting material

Designation	PU	Product designation	Order no.
V2N insulating cap	1	ISOLIERKAPPE V2N „lange Variante“	<b>31516-0100</b>
Insulating cap V2 MD	1	ISOLIERKAPPE V2 MD	<b>31607-0100</b>
1 SATZ V-KLEMME 35-70 SM MIT LASCHE	3	1 SATZ V-KLEMME 35-70 SM MIT LASCHE	<b>36025-0010</b>
V-clamp 35 – 25 mm <sup>2</sup> sm, 70 – 240 mm <sup>2</sup> se (1 kit = 3 pieces)	3	1 SATZ V-KLEMME 35-185 SM V2	<b>36025-0060</b>
1 kit (3 pieces) of claw clamps M12 for 50 – 150 mm <sup>2</sup> se	3	ANSCHLUSSKLEMMEN 50-150 SE FÜR S6 1 SATZ	<b>36063-0010</b>

## Accessories

### NH Fuse-Switches, vertical design, size 1 – 3



36298-0010

#### Aluminum V-clamp

**Features:**

- Kit = 3 pieces

Designation	PU	Product designation	Order no.
V2MD clamp for 25 – 300 mm <sup>2</sup> se	3	1 Satz Klemmen V2 MD 240sm/300rm	<b>36298-0010</b>



36354-0010

#### Contact hook

**Features:**

- Easy to retrofit
- Busbar thickness 5 – 10 mm
- Max. busbar width 100 mm
- Not suitable for coupling units
- Kit = 3 pieces

Designation	Size	PU	Product designation	Order no.
Contact hooks for E <sup>3</sup> -NH fuse-switches, vertical design, size 1 – 3 for direct mounting to busbars with a thickness of 5 – 10 mm	1-3	3	HAKENKLEMME E <sup>3</sup> 1-3 1 Satz (3 Stück)	<b>36354-0010</b>



36719-0010

#### Screw terminal M12x30

**Features:**

- With coiled spring element, ø 28 mm
- For busbar mounting or terminal connection
- Kit = 3 pieces

Designation	Size	PU	Product designation	Order no.
Screw terminal M12 x 30, with coiled spring element	1-3	3	Sammelsch. Anschl. M12x30 1Satz (3Stück)	<b>36719-0010</b>
Retrofit kit for stud		3	Nachrüstsatz B6 E <sup>3</sup> 1-3	<b>36369-0010</b>



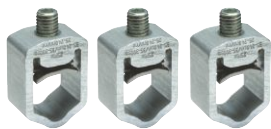
36350-0010

#### Steel captive clamp

**Features:**

- Steel captive clamp for multiple-use terminal
- Can retrofitted to screw terminal M12
- Corrosion-resistant
- Kit = 3 pieces

Designation	Size	PU	Product designation	Order no.
Steel captive clamp for retrofitting of multiple-use terminal, 35-240 rm, 35-300 re, 50-300 sm/se	1-3	3	Klemme E <sup>3</sup> FEST 50-240sm 1SATZ (3ST)	<b>36350-0010</b>



36298-0010

#### V-clamps

**Features:**

- Kit = 3 pieces

Designation	PU	Product designation	Order no.
V2MD clamp for 25 – 300 mm <sup>2</sup> se	3	1 Satz Klemmen V2 MD 240sm/300rm	<b>36298-0010</b>



36851-0010

#### Connecting pieces and terminal kits for parallel switches

Designation	PU	Product designation	Order no.
Connecting piece 2 x cover E <sup>3</sup> , 1-3, 3-pole	1	Verbindungssatz 2xDeckel E <sup>3</sup> 1-3 3-polig	<b>36849-0010</b>
Connecting piece 2 x cover E <sup>3</sup> , 1-3, 1-pole	3	Verbindungssatz 2xDeckel E <sup>3</sup> 1-3 1-polig	<b>36850-0010</b>
Terminal kit 2 x E <sup>3</sup> , 1-3 parallel	1	Anschlussgarnitur 2x E <sup>3</sup> 1-3 parallel	<b>36851-0010</b>

## Accessories

### NH Fuse-Switches, vertical design, size 1 – 3



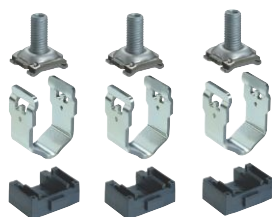
36353-0010

#### V-clamp

##### Features:

- Kit = 3 pieces

Designation	Size	PU	Product designation	Order no.
Steel V-clamp, 35-240 rm, 35-300 re, 50-240 sm, 50-300 se	1-3	3	Klemme E <sup>3</sup> VST 35-240rm 1Satz (3St)	<b>36353-0010</b>
E <sup>3</sup> clamp COMPL., 2 x 95 – 185sm, 1 kit (3 pcs)		3	Klemme E <sup>3</sup> VST 2x95-185sm 1SATZ (3ST)	<b>36754-0010</b>



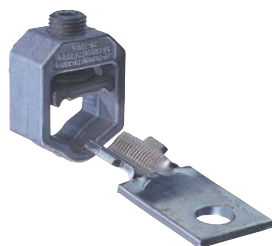
36351-0010

#### Steel captive V-clamp

##### Features:

- For retrofitting to V-clamp for size 1 – 3  
- Kit = 3 pieces

Designation	Size	PU	Product designation	Order no.
Steel captive V-clamp, 35-240 rm, 35-300 re, 50-240 sm, 50-300 se	1-3	3	Klemme E <sup>3</sup> VEST 35-240rm 1Satz (3St)	<b>36351-0010</b>



36299-0010

#### PEN lug

##### Features:

- For V-clamps- Twist-proof

Designation	Size	PU	Product designation	Order no.
PEN connection with lug, twist-proof, V2 MD-clamp, 25 – 300 mm <sup>2</sup>	1-3	3	PEN-Anschluss 1Satz (3St)	<b>36404-0010</b>
PEN-connection with lug, twist-proof, V2 MD clamp, 25 – 300 mm <sup>2</sup> se		1	PEN-Anschluss m. Klemme V2MD 240sm/300rm	<b>36299-0010</b>
MP terminal unit V2N 300 rm/sm		1	MP-Anschlusseinheit V2N 300 rm/sm	<b>36138-0020</b>



36444-0010

#### Connecting kit for 2 x 300 mm<sup>2</sup>

##### Features:

- For E<sup>3</sup>-NH fuse-switches, vertical design, of sizes 1 – 3  
- Per phase 2 x max. 300 mm<sup>2</sup>

Designation	Size	PU	Product designation	Order no.
E <sup>3</sup> connecting kit for 2 x 300 mm <sup>2</sup>	1-3	1	E <sup>3</sup> Anschlusset 2x 300mm <sup>2</sup>	<b>36444-0010</b>



36435-0010

#### Terminal cover, long

##### Features:

- Terminal cover 36444-0010  
- For optimal protection against accidental contact

Designation	Size	PU	Product designation	Order no.
E <sup>3</sup> terminal cover, extra long	1-3	1	E <sup>3</sup> Anschlussraumabdeckung extra lang	<b>36435-0010</b>

#### Feeding clamp

Designation	Size	PU	Product designation	Order no.
Feeding clamp IP2X COMPL. 35 – 240rm		3	Einspeiseklemme IP2X VST 35-240rm	<b>36846-0010</b>

## Accessories

### NH Fuse-Switches, vertical design, size 1 – 3



36431-0010

#### E<sup>3</sup>-wiring kit for voltage cut-out

**Features:**

- Ready for connection to E<sup>3</sup>-NH fuse-switch, vertical design
- Connects to input or output
- Includes cable holder and terminal screws

Designation	PU	Product designation	Order no.
Wiring kit for voltage cut-out	1	Verdrahtungskit f. Spannungsabnahme	<b>36431-0010</b>



36430-0010

#### E<sup>3</sup>-wiring kit for current transformers

**Features:**

- Secondary lines 2.5 mm<sup>2</sup>, black, no. 1 – 6
- Fits plug connections, isolation terminals or metering devices
- For top or bottom terminal
- Impulse-withstand voltage 3 kV
- Includes cable holder

Designation	PU	Product designation	Order no.
1-phase wiring kit for current transformers, secondary line 2.5 mm <sup>2</sup> , black, no. 1 – 6, impulse-withstand voltage 3 kV	1	Verdrahtungskit f. 1 Stromwandler	<b>36429-0010</b>
3-phase wiring kit for current transformers, secondary line 2.5 mm <sup>2</sup> , black, no. 1 – 6, impulse-withstand voltage 3 kV	1	E <sup>3</sup> Verdrahtungskit f. 3 Stromwandler	<b>36430-0010</b>



36382-0010

#### Clip-on E<sup>3</sup>-cable holder

**Features:**

- Clip-on holder for neat cable routing
- For voltage metering or secondary lines

Designation	PU	Product designation	Order no.
Clip-on cable holder, mounted on rear side	1	Kabelhalter E <sup>3</sup> Gr.1-3	<b>36382-0010</b>



36379-0010

#### Window locking system

**Features:**

- Locks sliding window
- Installs internally
- Screws
- Kit = 3 pieces

Designation	Size	PU	Product designation	Order no.
Window locking system against unauthorized use	00 - 3	3	1Satz (3St) Stromdiebstahlsich. E <sup>3</sup> 00-3	<b>36379-0010</b>



36375-0010

#### Microswitch for position indication

**Features:**

- NC-contact or NO-contact microswitch- 2 A / 250 V AC plug-in tab 2.8 x 0.5 mm

**Use:**

- 3 microswitches for 1-pole switching- 1 microswitch for 3-pole switching

Designation	PU	Product designation	Order no.
Microswitch for switch position indication, 1 NC contact or 1 NO contact, 1 kit = 6 pieces	6	Mikrosch.Schaltstellung. E <sup>3</sup> 1-3(1Set=6St)	<b>36375-0010</b>



36407-0010

#### Handle cover

**Features:**

- Clips onto handle
- Red color
- 1 kit = 3 pieces

Designation	Size	PU	Product designation	Order no.
Clip-on handle cover, red	1-3	3	Griffblende E <sup>3</sup> Gr.1-3 rot 3St	<b>36407-0010</b>

## Accessories

### NH Fuse-Switches, vertical design, size 1 – 3



36420-0010

#### Device carrier, low, with isolation terminal holder

##### Features:

- Fits **E<sup>3</sup>**-NH fuse-switches, vertical design
- With isolation terminal holder
  - e. g. in combination with multifunctional measurement device
- Includes mounting and earth screws

Designation	PU	Product designation	Order no.
Device carrier, low, with isolation terminal holder	1	Halteplatte mittel	<b>36420-0010</b>



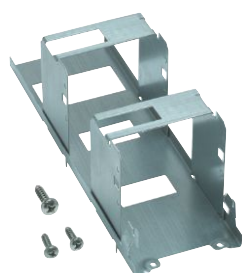
36421-0010

#### Device carrier with DIN adapter and isolation terminal holders

##### Features:

- Fits **E<sup>3</sup>**-NH fuse-switches, vertical design
- One DIN adapter on front face
- With isolation terminal holder
- Includes mounting and earth screws

Designation	PU	Product designation	Order no.
Device carrier with DIN adapter and isolation terminal holders, 352 mm long	1	Geräteträger lang 1 DIN-Schienehalter	<b>36421-0010</b>



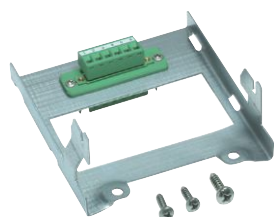
36374-0010

#### Device carrier with two DIN adapters and isolation terminal holders

##### Features:

- Fits **E<sup>3</sup>**-NH fuse-switches, vertical design
- Two DIN adapters on front face and low isolation terminal holders
- Includes mounting and earth screws

Designation	PU	Product designation	Order no.
Device carrier with 2 DIN adapters and isolation terminal holders	1	Gerätetr.2DIN-Schieneh. Messw. Trennkl	<b>36374-0010</b>



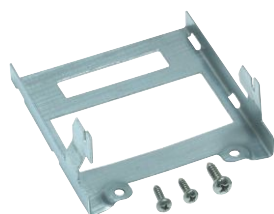
36370-0010

#### Device carrier, low, with 6-pole plug-connection

##### Features:

- Fits **E<sup>3</sup>**-NH fuse-switches, vertical design
- Terminal cross-section 2.5 mm<sup>2</sup>
- 250 V / 12 A
- e. g. microswitch or current transformer wiring
- Includes mounting and earth screws

Designation	PU	Product designation	Order no.
Device carrier, low, with 6-pole plug-connection, clamp cross-section 2.5 mm <sup>2</sup> , 250 V / 12 A	1	Geräteträger kurz mit Stecker 6p.	<b>36370-0010</b>



36419-0010

#### Device carrier, low, with DIN adapter

##### Features:

- Fits **E<sup>3</sup>**-NH fuse-switches, vertical design
- For the installation of devices and terminals
- Includes mounting and earth screws

Designation	PU	Product designation	Order no.
Device carrier, low, with DIN adapter	1	Halteplatte kurz	<b>36419-0010</b>

## Accessories

### NH Fuse-Switches, vertical design, size 1 – 3

Power distribution components



36371-0010

#### Device carrier with DIN adapter

**Features:**

- Fits **E<sup>3</sup>**-NH fuse-switches, vertical design
- One DIN-adapter on front face
- Includes mounting and earth screws

Designation	PU	Product designation	Order no.
Device carrier with DIN adapter	1	Gerätetr. 1 DIN-Schienehalter	<b>36371-0010</b>



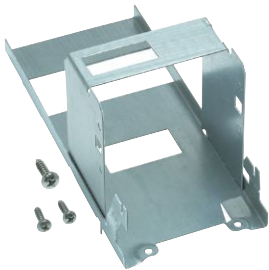
36372-0010

#### Device carrier with DIN adapter and 6-pole plug-connection

**Features:**

- Fits **E<sup>3</sup>**-NH fuse-switches, vertical design
- One DIN-adapter on front face
- 6-pole plug connection
- Terminal cross-section 2.5 mm<sup>2</sup>
- 250 V / 12 A
- Includes mounting and earth screws

Designation	PU	Product designation	Order no.
Device carrier with DIN adapter and 6-pole plug-connection, clamp cross-section 2.5 mm <sup>2</sup> , 250 V / 12 A	1	Gerätetr. 1 DIN-Schieneh. Steckverb.6p	<b>36372-0010</b>



36373-0010

#### Device carrier with DIN adapter and isolation terminal holders

**Features:**

- Fits **E<sup>3</sup>**-NH fuse-switches, vertical design
- One DIN-adapter on front face
- With isolation terminal holder
- Includes mounting and earth screws

Designation	PU	Product designation	Order no.
Device carrier with DIN adapter and isolation terminal holders, 225 mm long	1	Gerätetr. 1 DIN-Schieneh. Messw. Trennkl	<b>36373-0010</b>

## Accessories

### NH Fuse-Switches, vertical design, size 1 – 3



36422-0010

#### Device carrier, long, 120 mm

##### Features:

- For flush installation of device
- Frames can be joined

Designation	Size	PU	Product designation	Order no.
Device carrier E <sup>3</sup> , size 1 – 3, long, 72 x 72 mm	1-3	1	Gerätehalter E <sup>3</sup> Gr.1-3 lang 72x72mm	<b>36383-0010</b>
Device carrier E <sup>3</sup> , size 1 – 3, long, 96 x 96 mm	1-3	1	Gerätehalter E <sup>3</sup> Gr.1-3 lang 96x96mm	<b>36422-0010</b>
Device carrier E <sup>3</sup> , size 1 – 3, long, blank	1-3	1	Gerätehalter E <sup>3</sup> Gr.1-3 lang blind	<b>36423-0010</b>



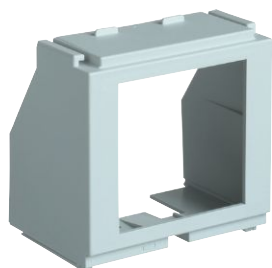
36437-0010

#### Device carrier

##### Features:

- Covers oversized cut-outs
- Length adjustment up to 100 mm
- Installation depth to front of 150 mm

Designation	PU	Product designation	Order no.
Device carrier, 120 mm long, blanking element for adjustment	1	E <sup>3</sup> Geräteh. Gr.1-3 lang blind Ausgl.	<b>36437-0010</b>



36424-0010

#### Device carrier, short, 97 mm

##### Features:

- For flush installation of device

Designation	PU	Product designation	Order no.
Device carrier, 97 mm long, cut-out 72 x 96, for flush installation	1	Gerätehalter E <sup>3</sup> Gr.1-3 kurz 72x72mm	<b>36424-0010</b>
Device carrier, 97 mm long, blanking element	1	Gerätehalter E <sup>3</sup> Gr.1-3 kurz blind	<b>36425-0010</b>



36427-0010

#### Device carrier, short, 97 mm

##### Features:

- For plug-in metering devices

Designation	PU	Product designation	Order no.
Device carrier, 97 mm, for clip-on metering devices, 1-phase	1	Gerätehalter kurz 1phasig	<b>36426-0010</b>
Device carrier, 97 mm, for clip-on metering devices, 3-phase	1	Gerätehalter E <sup>3</sup> Gr.1-3 kurz 3phasig	<b>36427-0010</b>



36428-0010

#### Device cover

##### Features:

- Snaps onto E<sup>3</sup>-NH fuse-switch, vertical design
- Device carrier and cover can be joined
- Can be trimmed to fit devices of 45 – 90 mm width

Designation	PU	Product designation	Order no.
Device cover, can be trimmed to fit devices of 45 – 90 mm width	1	Geräteabdeckung E <sup>3</sup> Gr.1-3 NEOZED	<b>36428-0010</b>



Accessories  
NH Fuse-Switches, vertical design, size 1 – 3



**Sealing kit**

**Features:**

- Fits device cover 36428-0010 and surge/overcurrent protectors
- For D01 fuse bases or other devices

36434-0010

Designation	PU	Product designation	Order no.
Sealing kit for device cover 36428-0010	1	Plombierung mit Bügel	<b>36434-0010</b>

Power distribution  
components