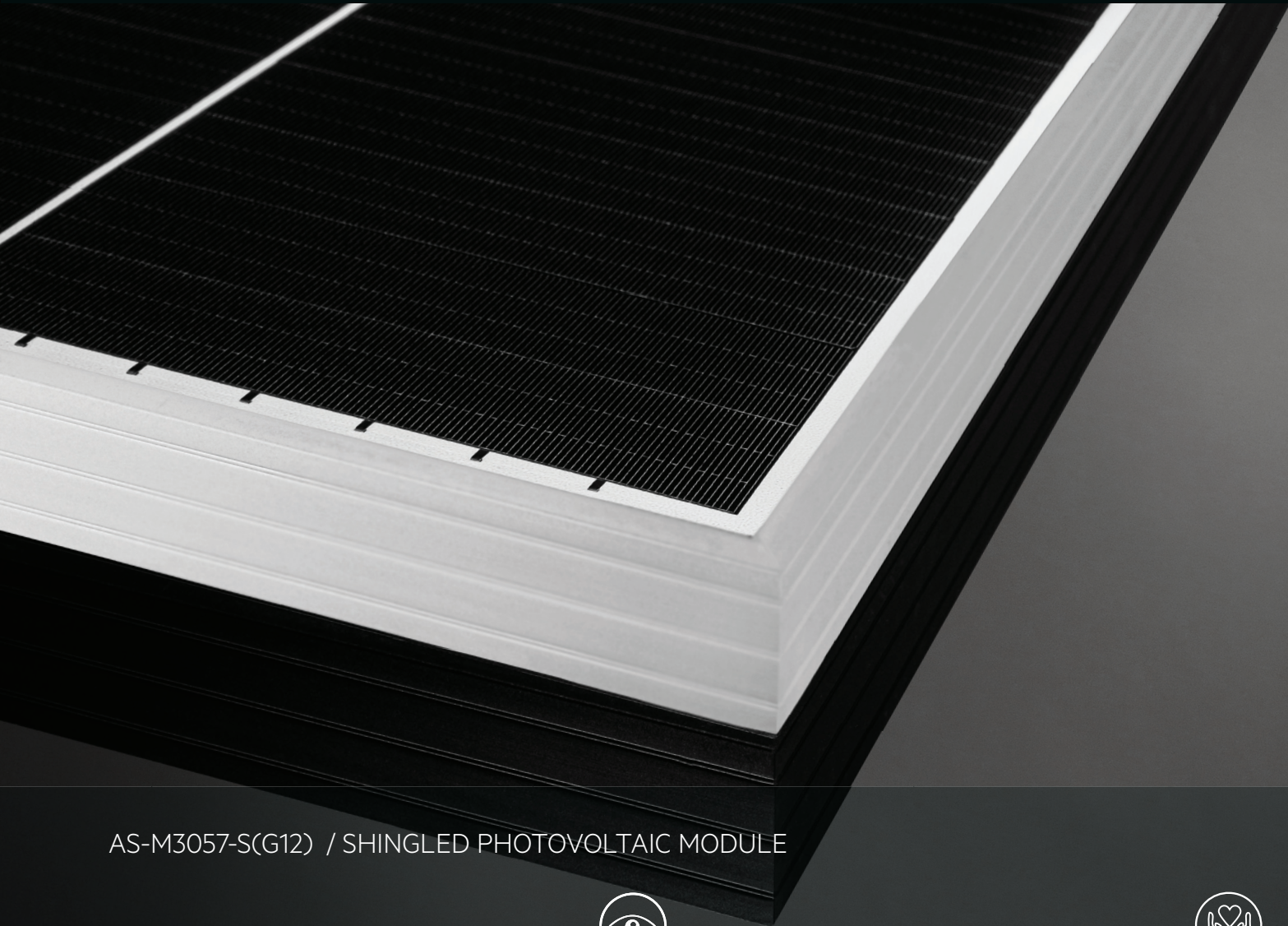


AEG

AEG HIGH EFFICIENCY SERIES



AS-M3057-S(G12) / SHINGLED PHOTOVOLTAIC MODULE

Characteristics



Power range: 415-425 Wp
Shingled-cell technology
Suitable for: residential / commercial installations

Product Name Code (PNC)



AS-M3057-S(G12)-415/420/425/HV
(white backsheet, silver frame)
AS-M3057Z-S(G12)-415/420/425/HV
(white backsheet, black frame)

Extra peace of mind



Extensive certifications and rigorous Quality Control
15 years product warranty
25 years performance warranty

Advantages



More converting surface, more energy outputs
Outstanding sleek optics
Extra long cables for greater installation flexibility

AS-M3057-S(G12) / SHINGLED PHOTOVOLTAIC MODULE

PRODUCT SERIES & NAMECODE (PNC)	
AEG HIGH EFFICIENCY SERIES	
AS-3057-S(G12)-415/420/425/HV, silver frame	
AS-3057Z-S(G12)-415/420/425/HV, black frame	

ELECTRICAL CHARACTERISTICS AT STC ^{1,2}				
Nominal Power (Pmax)	[Wp]	415	420	425
Power Sorting ³	[W]	0-5	0-5	0-5
Maximum Power Voltage (Vmp)	[V]	34.4	34.5	34.6
Maximum Power Current (Imp)	[A]	12.08	12.19	12.30
Open Circuit Voltage (Voc)	[V]	41.5	41.6	41.7
Short Circuit Current (Isc)	[A]	12.80	12.92	13.03
Module Efficiency (ηm)	[%]	20.9	21.1	21.4
Maximum System Voltage	[V]	1500	1500	1500
Series Fuse Maximum Rating	[A]	25	25	25

ELECTRICAL CHARACTERISTICS AT NMOT ⁴				
Maximum Power (Pmax)	[W]	312	316	320
Maximum Power Voltage (Vmp)	[V]	32.8	32.9	33.0
Maximum Power Current (Imp)	[A]	9.53	9.62	9.70
Open Circuit Voltage (Voc)	[V]	39.6	39.7	39.8
Short Circuit Current (Isc)	[A]	10.31	10.41	10.50

MECHANICAL CHARACTERISTICS		
Solar cells	monocrystalline [pcs]	305
	Dimensions [mm]	shingles based on G12 cells
Front glass	high-transparency	
	Thickness [mm] / [in]	3.2 / 0.126
Backsheet	White	
Encapsulant	EVA	
Frame	Anodized aluminum alloy	Silver or black
Junction box	Split-type, IP68	
	Bypass diodes	2
UV-resistant cables	Length [mm] / [in]	1300 / 51.18
	Section [mm ²]	4
Connectors	MC4-compatible	
Dimensions	H x L x W [mm]	1812 x 1096 x 30
	H x L x W [in]	71.34 x 43.15 x 1.18
Weight	[kg] / [lbs]	20.8±0.3 / 45.84±0.66
Maximum load	Wind / Snow [Pa]	2400 / 5400
Fire Class	Class C	

PACKAGING		
Packing configuration	[pcs/pallet]	36 (24 pallets) + 30 (2 pallets)
Loading capacity	[pcs/40 ft container]	924

NOTES
1-Standard Test Conditions (STC): Irradiance 1000 W/m ² , Air Mass AM = 1.5, Cell Temperature 25°C
2-Measurement tolerances (IEC 61215:2016): Pmax±3%, Voc±3%, Isc±3%
3-AEG photovoltaic modules are classified according to a principle of positive power tolerance: the Power Output measured at STC of the delivered modules exceeds their assigned Nameplate Nominal Power
4-NMOT: Nominal operating temperature of module, Irradiance 800 W/m ² , Wind Speed 1m/s; Ambient Temperature 20°C, Air Mass AM=1.5
5-Full text of the Warranty Terms available at: www.aeg-industrialsolar.de . If not offered by your distributor, the standard warranty conditions apply.
6-(H/GB) No less than 98% of the minimum "Peak Power at STC" in the first year; power output decline no more than 0.55% per year thereafter, ending with 84.8%.
Dimensions in the technical picture are expressed in mm with tolerance ±2 mm (±0.079") / Version 2022.08.01EN © Solar Solutions Group. Specifications in this datasheet are subject to change without notice.
AEG is a registered trademark used under license from AB Electrolux (publ).

CERTIFICATIONS	
System	ISO 9001, ISO 14001, ISO 45001
Product	IEC 7 EN 61215-1:2016/IEC 7 EN 61215-1:2016/IEC 61215-2:2016 / EN 61215-2:2017 + AC:2017 + AC:2018; IEC 61730-1:2016 / EN IEC 61730-1:2016 + AC:2018; IEC 61730-2:2016 / EN IEC 61730-2:2016 + AC:2018

WARRANTIES		
Product warranty ⁵	[years]	15
Performance warranty (linear) ⁶	[years]	25

TEMPERATURE CHARACTERISTICS		
NMOT	[°C]	42.3 (±2)
Pmax Temp. Coefficient (γ)	[%/°C]	-0.34
Voc Temp. Coefficient (β)	[%/°C]	-0.27
Isc Temp. Coefficient (α)	[%/°C]	0.04
Operating temperature	[°C]	-40~+85

